

sustainable packaging



ENVIRONMENTALLY RESPONSIBLE PACKAGING PRODUCTS



We hold ourselves responsible for improving the environment through sustainability, recycling and waste reduction.



sustainable packaging

Here at Brackadams Packaging Supplies we hold ourselves responsible for improving the environment through sustainability, recycling and waste reduction. The environmental impact of non-degradable packaging is increasing and following the ban on exports of plastic waste combined with the plastic tax, this is an issue that needs addressing urgently.

We are constantly searching for and introducing new products that contribute to a cleaner, more sustainable environment, whilst maintaining productivity and profitability. In this brochure you will see a variety of products that will help your business become more environmentally friendly whilst streamlining supply to operate efficiently.

- We are conscious of the cost of doing business and offer various services including 24/7 stock and serve, whereby we stock your products in our warehouse which reduces the risk of running out, which in turn saves paying premiums to get products quickly and wasting valuable time sorting problems.
- Enhance your branding by using our bespoke service. Cardboard boxes can be produced and supplied plain, or printed, to your specifications, custom made to your size and style requirements.
- For protection and security we offer plain and printed paper tape. Our eco-friendly paper tape fits on conventional tape guns. As well as promoting your branding, security is increased as it is obvious if the seal is broken.
- We specialise in working with start-up companies in selecting their ecommerce boxes to ensure their business is eco-friendly from the outset.



BRACKADAMS
Packaging Supplies

Brackadams Packaging Supplies

T: +44 (0)1787 389133

E: contact@brackadamsp.co.uk

www.brackadamsp.co.uk



This brochure is produced from recyclable paper. We hope you will find it useful and keep it on your desk, if not please pass to a colleague, return to us or pop in the recycling bin so it gets another chance in life.

Thank you!

Contents

Mailing

Envelopes & Doc. Enclosed Wallets	4
Paper Mailing Bags	5
Padded Kraft Paper Mailing Bags	6
ECO-X Kraft Paper Tapes	7

Void Fill

Cardboard Shredders	8
Paper Void Fill Systems	12
Air Pillow Void Fill	14

Water Activated Tapes

The Advantages of WAT	16
WAT Dispensers	17
WAT	19

Hot Melt Glues

Glues	20
-------	----

Paper Protection

Edgeboards	22
Corrugated Edgeboards	23
Kraft Papers	23
Pre-Stretched Stretch Wrap	23
Flexible Paper Sleevings	24
X-Wrap Protective Paper System	25

Stretch Wrap Machines

Robot Stretch Wrapper	26
Stretch Wrap Turntables	27

What Consumers Want from Environmentally Friendly Packaging



% who say the following packaging features are important to them

64%



Packaging that is recyclable

46%



Products that don't over package

36%



Packaging made from renewable resources



53%

Packaging that is reusable



39%

Compostable/biodegradable packaging



35%

Easy to separate materials for disposable

Question: When it comes to packaging that is environmentally friendly, which of the following factors are important to you? **Source:** GlobalWebIndex March 2019

Mailing

Biodegradable Packing List Paper Envelopes

- > Plain self-adhesive clear paper wallets
- > Solvent free, permanent hotmelt adhesive
- > Manufactured from Biodegradable Glassine Paper



Specifications			
Code	Internal size (mm)	Qty per box	Weight (kg/box)
A6PPL	162 x 120	1,000	3.2
A5PPL	228 x 165	1,000	5.6
A4PPL	320 x 250	500	6.0

Biodegradable Documents Enclosed Paper Wallets

- > Printed self-adhesive clear paper wallets
- > Printed **DOCUMENTS ENCLOSED**
- > Solvent free, permanent hotmelt adhesive
- > Manufactured from Biodegradable Glassine Paper



Specifications			
Code	Internal size (mm)	Qty per box	Weight (kg/box)
A6PDE	162 x 120	1,000	3.2
A5PDE	228 x 165	1,000	5.6
A4PDE	320 x 250	500	6.0

Penalty Charge & Parking Charge Notice Wallets

- > Low tack adhesive
- > Standardised message and graphics, suitable for use in any location



Specifications			
Code	Internal size (mm)	Qty per box	Weight (kg/box)
PCNE-BIO	130 x 120	1,000	2.0

Paper Mailing Bags

The eco-friendly alternative to plastic mailing bags. Strong, resilient, cost-effective and available in a range of sizes.

- > 100% virgin kraft paper
- > Fully recyclable, compostable and biodegradable
- > Raw material sourced from sustainable forests
- > Peel and seal is fully recyclable
- > Inks used are also water based and non-toxic
- > Meets all applicable regulations in terms of REACH, SVHC and Food Contact



Specifications

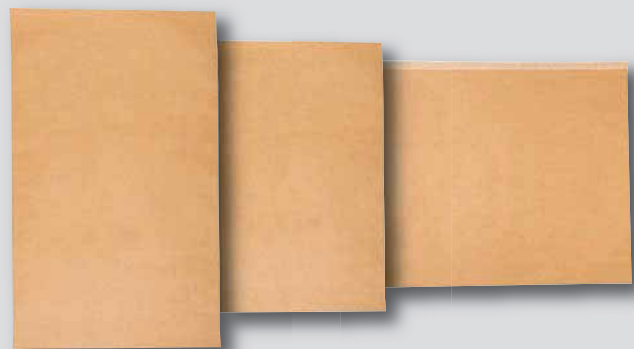
Code	Description	Approximate Size W x Gusset x L + Lip	Qty Bundle	Weight (g/case)
Type: Single Peel and Seal Kraft Paper Mailing Bags				
PMBS180-60-270	Paper Mailing Bag SGL Peel, 95gsm	W180 x BG60 x L270 + 35mm lip	50	550
PMBS240-60-340	Paper Mailing Bag SGL Peel, 90gsm	W240 x BG60 x L340 + 30mm lip	50	840
PMBS280-60-415	Paper Mailing Bag SGL Peel, 90gsm	W280 x BG60 x L415 + 30mm lip	50	1,172
PMBS325-100-500	Paper Mailing Bag SGL Peel, 100gsm	W325 x BG100 x L500 + 30mm lip	50	1,852
PMBS380-80-480	Paper Mailing Bag SGL Peel, 95gsm	W380 x BG80 x L480 + 30mm lip	50	1,847
PMBS650-100-555	Paper Mailing Bag SGL Peel, 100gsm	W650 x BG100 x L555 + 30mm lip	25	2,031
Type: Single Peel and Seal - Side Gusset - Kraft Paper Mailing Sack				
PMS255-75-425	Paper Mailing Bag, SGL Peel, 2 Ply, 70gsm	W255 x SG75 x L425mm + 55mm lip	50	1,750
Type: Double Peel and Seal Kraft Paper Mailing Bags				
PMBD240-60-335	Paper Mailing Bag DBL Peel, 80gsm	W240x BG60 x L335 + 40mm lip	50	749
PMBD325-100-430	Paper Mailing Bag DBL Peel, 100gsm	W325 x BG100 x L430+ 40mm lip	50	1,642
PMBD415-100-550	Paper Mailing Bag DBL Peel, 100gsm	W415 x BG100 x L550+ 40mm lip	50	2,594
Type: Click & Collect - Double Peel and Seal Kraft Paper Mailing Bags				
PMBD380-60-405-POH	Paper Mailing Bag DBL Peel, 100gsm (70mm Handle)	W380 x BG60 x L405 + 55mm lip	50	2,042
PMBD280-60-445-POH	Kraft Paper Mailing Bag DBL Peel, 100gsm (70mm Handle)	W280x BG60 x L445 + 40mm lip	50	1,596



Bespoke Printed Paper Mailing Bags

Use Tenza® Paper Mailing Bags as the perfect branding opportunity and as a sign of your environmental commitment.

Speak to a member of the team to discuss your bespoke mailing bag printing needs. Minimum order quantity of 25,000 for bespoke units.



Padded Kraft Paper Mailing Bags

Made from mixed recycled and virgin paper this is our most sustainable padded mailer yet.



Fully compostable, the Kraft paper waffle padding provides extra strength for cushioning and protection.

- > Made from mixed recycled and virgin paper
- > Outer paper 110gsm kraft recycled paper
- > Padded content 1 layer 80gsm virgin paper die cut into honeycomb form
- > Fully compostable
- > Kraft virgin paper padding
- > Hotmelt glue adhesive
- > Size tolerance +/-5mm



Specifications

Code	Description	Approximate Size W x L + Lip	UOM	Weight (Kg/box)
Type: Single Peel and Seal Kraft Paper Mailing Bags				
PMPB162-229	Kraft Mesh Paper Padded Bags, W162 x L229mm + 50mm flap, 190gsm	W162 x L229 + 50mm lip	100	2.91
PMPB180-265	Kraft Mesh Paper Padded Bags, W180 x L265mm + 50mm flap, 190gsm	W180 x L265 + 50mm lip	100	3.61
PMPB205-245	Kraft Mesh Paper Padded Bags, W205 x L245mm + 50mm flap, 190gsm	W205 x L245 + 50mm lip	100	3.74
PMPB230-320	Kraft Mesh Paper Padded Bags, W230 x L320mm + 50mm flap, 190gsm	W230 x L320 + 50mm lip	100	5.23
PMPB240-340	Kraft Mesh Paper Padded Bags, W240 x L340mm + 50mm flap, 190gsm	W240 x L340 + 50mm lip	100	5.73





ECO-X Kraft Machine Paper Tape

Environmentally friendly Kraft Paper machine tape which is 100% recyclable.

This single sided paper tape is an environmentally friendly product, that is easily recyclable.

Characterised by strong adhesion in high and low temperatures, the ECO-X machine tape enables your business to reach its sustainability goals without compromising on product quality.



new



Specifications

	ECO50X-300	ECO75X-300
Code:	ECO50X-300	ECO75X-300
Carrier:	Kraft Paper	Kraft Paper
FSC Sourced:	Yes	Yes
Glue:	Hotmelt	Hotmelt
Width:	50mm	75mm
Length:	300mtr	300mtr
Thickness (EN 1942):	89mu	89mu
Tensile Strength:	135 N/inch	135 N/inch
Adhesion at 180° (EN 1939):	6.5 N/inch [≥4,5]	6.5 N/inch [≥4,5]
Shear (EN 1943):	≥ 120 h	≥ 120 h
Colour:	Buff	Buff
Box Qty:	6	4

ECO-X Kraft Paper

Environmentally friendly alternative to self-adhesive vinyl tape

- > Hotmelt adhesive
- > Kraft paper tape
- > Environmentally responsible
- > Hotmelt adhesive
- > 50mtr length, 75mm tape core



Specifications

Code	Width	Rolls /case	Weight (kg/case)
ECO38X	38mm	48	9.00
ECO50X	50mm	36	9.00
ECO75X	75mm	24	9.00





Void Fill

Now here's a challenge – create high-bulk packaging material that reduces packaging waste! But we have the answer; **in fact we have several.**

Cardboard Shredders

Optimax shredders contribute cost-effectively to reducing carbon footprint and demonstrating eco-friendly credentials



- > Turn small quantities of old cardboard into lots of packaging material within a short time.
- > Create high-bulk void fill and protective matting material which reduces packaging costs and is ecologically beneficial.
- > Operator-friendly carton feed with punched measuring scale for precise packaging units.
- > Variable carton sizes automatically processed in a single step.
- > High motor torque for more powerful shredding action, even at low speeds.
- > Low maintenance reduces loss of productivity through downtime.
- > Improved power consumption/performance ratio.
- > Standard dust extraction device built into most models.



High bulk void fill from waste cartons



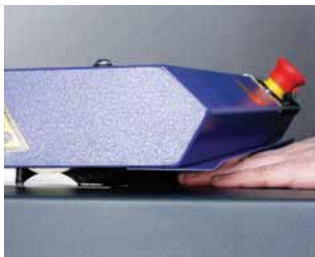
Protective matting for wrapping and layering



Standard dust extraction outlet built into most models



Fitted with IEC/EN 60204-1 compliant circuit breaker



Optimax puts operator safety first

Only the Optimax® range of cardboard shredders complies with BS EN ISO 13857:2008

Optimax is the first manufacturer to offer compliance with BS EN ISO 13857:2008 across its entire range of cardboard shredders.

This standard is the UK implementation of EN ISO 13857:2008 and stipulates that a 20mm-high opening to a blade mechanism must incorporate a minimum safety distance of 120mm.

As market leader in product innovation and operator safety, Optimax has exceeded these requirements to provide a safety distance of 140mm.



OP316

Single Phase Cardboard Shredder

Produces void fill or protective matting material



Cuts 320mm wide



Unlimited run time



No dust extraction outlet



230V
50Hz
0.75kW



Cuts 12mm thick



Output 1-2m³/hr
Feed rate 10mtr/min



W: 660mm
D: 660mm
H: 980mm



Warranty 12 months as standard



12 MONTHS PARTS OR RETURN TO BASE WARRANTY AS STANDARD.



92kg

OP320

Single Phase Cardboard Shredder

Produces void fill or protective matting material



Cuts 320mm wide



Unlimited run time



Dust extraction outlet



230V
50Hz
0.75kW



Cuts 12mm thick



Output 2-3m³/hr
Feed rate 12mtr/min



W: 660mm
D: 660mm
H: 980mm



Warranty 12 months as standard



12 MONTHS PARTS OR RETURN TO BASE WARRANTY AS STANDARD.



110kg

OP422-3PH

Three Phase Cardboard Shredder

Produces void fill or protective matting material

OP422-240V

Single phase with three phase inverter

Produces void fill or protective matting material



Cuts 420mm wide



Unlimited run time



Dust extraction outlet



200-400V
50Hz
1.5kW



Cuts 18mm thick



Output 4-6m³/hr
Feed rate 13mtr/min



W: 660mm
D: 660mm
H: 980mm



Warranty 12 months as standard



OP430-3PH

Three Phase Cardboard Shredder

Produces void fill or protective matting material



Cuts 420mm wide



Unlimited run time



Dust extraction outlet



400V 50-60Hz 4.0kW



Cuts 20mm thick



Output 7-10m³/hr
Feed rate 14-16mtr/min



W: 1100mm
D: 750mm
H: 800mm



Warranty 12 months as standard



12 MONTHS PARTS OR RETURN TO BASE WARRANTY AS STANDARD.



295kg

SFP100-1K

Dust Extraction Unit Single Phase

- > Reduce and collect airborne dust
- > 3mtr connection hose
- > Compatible with all Optimax® single phase shredders having a dust extraction outlet



12 MONTHS PARTS OR RETURN TO BASE WARRANTY AS STANDARD.



38kg

SFP200-1V

Dust Extraction Unit Three Phase

- > Reduce and collect airborne dust
- > 3mtr connection hose
- > Compatible with all Optimax® three-phase shredders having a dust extraction outlet



12 MONTHS PARTS OR RETURN TO BASE WARRANTY AS STANDARD.



45kg



90%

of products shipped are in cardboard

6.3 million tonnes

of paper thrown away in the UK each year



1 in 5

of the waste produced in the UK is from paper and cardboard



Paper Void Fill Systems

Kraft paper makes excellent, environmentally-responsible material for packing out spare space in oversized cartons, and Pacplan® has a range of manual and powered equipment to produce this rapidly on demand.

Manual Feed and Tear

- > X-FILL-MT clamps easily to edge of bench
- > X-FILL-MF is mounted on a floor stand
- > Uses perforated 50gsm kraft paper pack
- > Paper length decided by operator
- > Integral paper pack holder
- > Tilting feed head



X-FILL-MT
Manual
Table Mounted



X-FILL-MF
Manual
Floor Standing



Powered Feed and Manual Tear

- > X-FILL-ST clamps easily to edge of bench
- > X-FILL-SF is mounted on a floor stand
- > Anti-jamming paper feed
- > Uses perforated 50gsm and 70gsm kraft paper packs
- > Programmable or continuous paper length
- > Activated via foot pedal or control panel
- > Integral paper pack holder
- > Tilting feed head



X-FILL-ST
Semi-Auto
Table Mounted



X-FILL-SF
Semi-Auto
Floor Standing



pacplan 



Powered Feed and Cut

- > X-FILL produces void fill from perforated 50gsm and 70gsm kraft paper packs
- > X-PAD produces protective quilt from perforated single- and two-ply kraft paper packs
- > Anti-jamming paper feed

- > Programmable or continuous paper length
- > Automatically cuts paper at end of feed cycle
- > Activated via foot pedal or control panel
- > Mounted on castors for rapid deployment
- > Integral paper pack holder
- > Tilting feed head



X-FILL Automatic floor standing



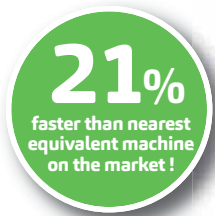
Simple to use digital control panel offers functional flexibility.

Quick and easy paper feed.



The X-FILL head can be tilted to precisely align the outfeed where required.

Lockable castors for extra stability.



X-PAD Automatic floor standing



Quick and easy X-PAD paper reloading.



Digital touch screen control panel.

Lockable castors for extra stability.



The X-PAD head can be tilted to precisely align the outfeed where required.



Specifications

Output type	Operation	Stand	Code	Power		Output (mtr/sec)	Dimensions L x W x H (mm)	Weight (kg)
				Supply	Usage (W)			
Void fill	Manual	Table clamped	X-FILL-MT	n/a	n/a	n/a	350 x 400 x 830	9.0
		Floor	X-FILL-MF	n/a	n/a	n/a	500 x 400 x 810	12.0
	Semi-auto	Table clamped	X-FILL-ST	230v 50Hz	90	1.4	570 x 420 x 900	22.0
		Floor	X-FILL-SF	230v 50Hz	90	1.4	720 x 620 x 1680-1880	30.0
Quilted padding	Automatic	Floor	X-FILL	230v 50Hz	100	>1.7	775 x 730 x 1700-2000	52.0
		Floor	X-PAD	230v 50Hz	200	>0.9	960 x 670 x 1550	48.0

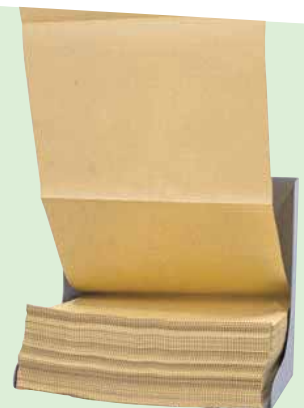
Void Fill Paper Packs

Patented paper packs produce the maximum degree of three-dimensional cushioning in proportion to paper usage. The design of the pack's leading edge also

makes it easy to feed into the X-PAD and multiple fan-folded paper packs can be spliced for continuous feed.

Specifications

System type compatibility	X-FILL-MF/MT X-FILL-SF/ST X-FILL	X-FILL-SF/ST X-FILL	X-PAD			
Description	1-ply, 50gsm	1-ply, 70gsm	2-ply, 70/70gsm	2-ply, 50/70gsm	1-ply, 70gsm	1-ply, 90gsm
Code	XF-P001	XF-P002	XP-P001	XP-P002	XP-P003	XP-P004
Paper width (mm)	381	381	762	762	762	762
Paper length (mtr)	500	360	300	350	360	360
Pack size (mm)	280 x 381 x 140	280 x 381 x 160	280 x 381 x 480	280 x 381 x 350	280 x 381 x 290	280 x 381 x 330
Pack weight (kg)	9.53	9.61	32.07	32.07	19.2	20.6



Air Pillow Void Fill

For use with the Pacplan® AirWave® range of air pillow void fill dispensers

Pacplan® Compostable Pillow Film

Pacplan® Biofilm household-compostable air pillow films are made from peelings and other waste by-products of the potato processing industry.

Pacplan® Biofilm compostable films rapidly disintegrate in domestic compost heaps, with no negative effects on compost quality.



PWF1B-1521

PWF4B-4235



Specifications

Code	Description	Roll width (mm)	Roll length (mtr)	Film thickness (mu)	Weight (kg/roll)
PWF1B-1521	Single 150mm chamber	210	500	20	5.50
PWF4B-4235	Four chambers across roll	420	350	20	7.50



71%

of companies surveyed reported that the last environmental improvement they carried out reduced costs

65%

of people in the UK are more likely to choose a product if it is in recyclable packaging



48%

believe the responsibility for recycling lies with packaging producers

60%

of consumers say they are likely to switch to a brand that is more environmentally friendly than their current brand



Environmentally Friendly Packaging is **now a necessity, not a luxury.**





Pacplan® Air Cushion Void Fill Film

Climate and cost-neutral protective packaging made from post consumer plastics with 100% of production CO₂ footprint offset against ecological projects in the Brazilian Rain Forest.



Pacplan® Climate Neutral Pillow Film

With Pacplan® Carbon Neutral Air Cushions, you can achieve 100% climate neutral transport protection for the safe shipping of your valuable goods.

Pacplan® Carbon Neutral Air Cushion film is made using more than 53% recycled content, most of which is collected post consumer plastic.

With the support of rainforest projects, we actively contribute all CO₂ from production and the raw materials. The combination of this results in a 100% compensation of the CO₂ footprint of Pacplan® Carbon Neutral films.

Pacplan® Carbon Neutral Air Cushion film is suitable for use with all Pacplan® AirWave™ air pillow machines.



Pacplan® PaperWave Pillow Film

Unrivalled environmental awareness. In shipping, on the ground and in water.

Our PaperWave BIO films are highly developed special films, combining the advantages of paper filling and air cushion film. But air is added to the paper filling, thus reducing material usage by approx. 85 – 90%.

They are designed to produce air-filled cushions with the help of the small and flexible PWN3, PW1 and PW2 air cushion systems. The air cushions produced are mechanically resilient, durable and reusable.

The film structure consists of a recycled paper layer and a starch blend – sealing layer laminated onto the paper. The ultra-thin sealing layer is made of a strong base of recycled biodegradable and compostable bio film, connected to the recycled paper layer with natural glue.



Pillows

Benefits - Sustainability

- > Packaging made from recycled paper and compostable film
- > Reducing the Environmental impact and Ecological footprint
- > 100% Bio-degradable and compostable
- > Light weight = lower freight costs
- > Kind to our Eco system – 95% air x 5% material
- > On demand packing – no waste or bulky storage of void fill
- > Lower carbon foot print than using foam, plastic and paper
- > Bears the RESY symbol – guarantees packaging is recyclable and accepted by paper and cardboard recyclers

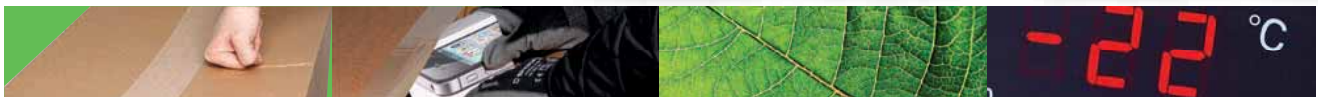
Water Activated Tapes

Tegrabond® water activated tape systems provide the ultimate tamper evident, integrated tape sealing security solution. Market-leading Tegrabond water activated tapes create an effective 'first line of defence' against potential pilferage and contamination.



Tegrabond tapes are made of sturdy kraft paper that creates a smooth, crease-free seal that blends permanently with the cardboard surface of the carton.

Tegrabond water activated tapes also require substantially less tape than pressure sensitive tapes to effectively seal a carton, resulting in a more professional presentation at a lower overall cost.



An Integral Closure

The adhesives in Tegrabond water activated tape penetrate into the fibres of the carton, creating a total bond. As the tape becomes an integral part of the carton this adds considerable strength and security to the closure. Adhesives used on conventional pressure sensitive packing tapes remain 'wet' and will lose adhesion with time or when subjected to extreme temperature or humidity.

Tamper Evidence

Tegrabond uses a permanent adhesive which prevents removal of the tape without clearly visible proof of tampering or damage to the carton. Glassfibre reinforced Tegrabond further enhances security. Cartons sealed with conventional packing tape can be easily compromised, as application of gentle heat will soften and reactivate the adhesive, permitting entry to the carton and resealing with no visible trace of disturbance.

100% Recyclability

Tegrabond is made entirely from renewable natural resources, which enables it to be easily recycled along with cardboard waste and suitable for landfill. Packaging research associations have all given Tegrabond recyclability accreditation, making it the environmentally-friendly choice for the packaging professional. Tegrabond water activated tape shows the customer that you care for the environment.

Temperature Tolerant

Even with extreme variations of temperature and humidity, Tegrabond retains its seal strength and remains highly resistant to ageing, making it the ideal solution for long-term storage.



Improved Presentation

Tegrabond outperforms plastic tape on presentation. Available in natural, oyster and white kraft, it blends naturally with cardboard cartons and is perfectly suited to personalised printing. With its greater rigidity and adhesion, Tegrabond avoids the ripples, bubbles, creasing, multiple layers and incomplete adhesion that are common with conventional tapes.

Cost Savings

Independent studies have proven that as Tegrabond uses less tape and creates a more secure seal, it provides more cost-effective carton sealing than conventional tape, particularly when used in conjunction with a Tegrabond electronic dispensing system.

Reduced Fatigue

The same independent studies also revealed that the combination of Tegrabond water activated tape and Tegrabond tape dispensing systems results in increased productivity and reduced incidence of operator fatigue. By switching to Tegrabond, medium-high volume users of packing tapes soon recoup the moderate costs of investment and create a happier, healthier and more productive working environment.



BP555

High Capacity Electronic Water Activated Tape Dispenser



Takes 305mtr tape rolls – The largest capacity in the industry

Features

- > Tape compatibility: plain or reinforced, gummed side in
- > Steel frame and rugged ABS casing
- > High capacity water bottle sufficient for wetting 2,500-3,600mtr of 70mm wide tape
- > Heavy duty, self-oiling blade
- > Colour coded keys pre-set for popular tape lengths
- > Tape length adjustable in 0.5" (12.7mm) increments, up to 3050mm
- > Random length function dispenses tape to any length
- > Automatic function repeatedly dispenses tape lengths
- > Can be operated from either side of the machine
- > Manufactured to meet or exceed FCC, UL, CE and CSA (CUL) regulations



Benefits

- > Largest tape roll capacity in the industry
- > Automatic functions for high productivity and versatility
- > Excellent design and build quality for ease of use, long life and service intervals

Specifications

- Maximum tape width: 76mm
- Maximum tape weight: 125gsm (excluding adhesive)
- Tape compatibility: Plain or reinforced WAT
- Power requirement: 220-240V AC, 50Hz, 500W

Just some of the many advantages of the BP555 include:



Largest tape capacity in the industry

Eliminates the need for frequent roll changes.

Extra heavy duty, self-lubricating blade

For consistently superior cutting.

Steel frame construction covered with ABS plastic

For strength, durability and impact resistance.

20% increase in motor power

For longer life, cooler running and smoother operation.

BP500

Electronic Water Activated Tape Dispenser



Features

- > Tape compatibility: reinforced only, gummed side in
- > Steel frame and powder coated mild steel casing
- > Colour coded keys pre-set for popular tape lengths
- > Tape lengths up to 3050mm
- > Maximum tape roll length 200mtr
- > UL, CE and CSA approved



Benefits

- > Competitively priced
- > Excellent design and build quality for long life

Specifications

- Max. tape width: 76mm
- Tape compatibility: Plain or reinforced WAT
- Power requirement: 220-240V AC, 50Hz, 500W



Adjustable Top Heater

Warms water to optimise bonding properties of water activated tape.

Blade Lifter

Allows quick clearing of debris from tape path without special tools.

Steel frame covered with ABS plastic

For strength, durability and impact resistance.

Large Water Bottle

Ensures less downtime, fewer refills.



BP333

Manual Water Activated Tape Dispenser



Features

- > Tape compatibility: plain or reinforced, gummed side in
- > Powder coated steel frame and rugged design
- > Manual length adjustment, max. 76cm tape length per stroke
- > Uniform wetting and clean cutting
- > Maximum tape roll length 200mtr
- > Maximum tape roll diameter 190mm

Gummed side out available on request

Benefits

- > Low investment for entry-level use
- > Simple maintenance and easy to use

Specifications

Max. tape width:	76mm
Tape compatibility:	Plain or reinforced WAT
Water bottle capacity:	1.25 litres



Superior Mechanics and Guillotine Blade

Delivers clean, even cutting of reinforced and non-reinforced tape

Rugged Engineering

Steel side frame construction ensures durability and long life

Fast Length Selection

Quickly choose one of 15 preset tape lengths on clearly marked dial

BP222

Manual Water Activated Tape Dispenser



Portable, Lightweight Design

Small Footprint for Limited Workspace

Features

- > Soft touch tape delivery
- > Easy push tape dispensing
- > Blade delivers clean, even tape cutting
- > Better Pack water brushes provide consistent, uniform tape wetting
- > Portable dispenser does not require electricity
- > Refillable and spill-resistant water tank holds one cup (227ml) of water to activate 114mtrs of tape
- > Push lever dispenses 254mm length of tape; repeat push lever for longer tape lengths

Specifications

Max. tape width:	70-72mm
Max. tape diameter:	152mm
Tape compatibility:	70mm x 100mtr kraft tape
Water bottle capacity:	227 ml



Eject and fill the water tank, then insert it back into place.

Remove cover to insert tape, then feed tape through slot.

Push lever to dispense tape to desired length.

Push cutter firmly to cut tape.

EPS80

Bench Top Water Activated Tape Dispenser



Features

- > Sturdy construction

Benefits

- > Economical option for low volume usage and entry-level applications

Specifications

Tape width: 80mm
Tape compatibility: Not suitable for reinforced tape

3S

Bench Top Water Activated Tape Dispenser



Features

- > Heavier duty construction than other pull-and-tear dispensers
- > 25 - 75mm tape width
- > Subway tape feed
- > Compatible with plain and reinforced WAT

Benefits

- > Excellent for low-volume usage
- > Simple design, built to last

Specifications

Max. tape width: 76mm

Tegrabond® Plain Tapes

- > High quality Tegrabond® water-activated paper tape increases consignment integrity
- > Increased stock holding. All sizes available from stock



Specifications

Code	Width	Length	Kraft weight	Kraft colour	Gummed side in/out	Rolls/case	Weight /case (kg)
38mm Core							
K2420B-60GSI	24mm	200mtr	60gsm	Brown	In	48	20.3
K3620B-60GSI	36mm	200mtr	60gsm	Brown	In	36	21.8
K3620B-60GSO	36mm	200mtr	60gsm	Brown	Out	36	21.8
K4820B-60GSI	48mm	200mtr	60gsm	Brown	In	30	23.4
K4820B-60GSO	48mm	200mtr	60gsm	Brown	Out	30	23.4
K7020B-60GSI	70mm	200mtr	60gsm	Brown	In	18	20.8
K7020B-60GSO	70mm	200mtr	60gsm	Brown	Out	18	20.8
K9620B-60GSI	96mm	200mtr	60gsm	Brown	In	12	19.2
K4820B-70GSI	48mm	200mtr	70gsm	Brown	In	30	26.2
K7020C38B-70GSI	70mm	200mtr	70gsm	Brown	In	18	23.2
K7020B-90GSI	70mm	200mtr	90gsm	Brown	In	18	30.9
K7020B-90GSO	70mm	200mtr	90gsm	Brown	Out	18	30.9
K4820W-70GSI	48mm	200mtr	70gsm	White	In	30	27.5
76mm Core							
K5020C76B-60GSO	50mm	200mtr	60gsm	Brown	Out	24	19.0
K7020C76B-70GSO	70mm	200mtr	70gsm	Brown	Out	18	23.6
K7015C76B-90GSO	70mm	150mtr	90gsm	Brown	Out	18	20.5
K9620C76B-70GSO	96mm	200mtr	70gsm	Brown	Out	12	21.2
K5020C76B-60GSI	50mm	200mtr	60gsm	Brown	In	24	20.6
K7020C76B-60GSI	70mm	200mtr	60gsm	Brown	In	18	19.8
K5020C76W-90GSO	50mm	200mtr	90gsm	White	Out	24	27.6
K7020C76W-90GSO	70mm	200mtr	90gsm	White	Out	18	26.8

Tegrabond® Reinforced Tapes



Specifications

Code	Width	Length	Tape weight (combined)	Kraft colour	Gummed side in/out	Rolls/case	Weight /case (kg)
38mm Core							
KR4810B-GSI	48mm	100mtr	125gsm	Brown	In	12	7.90
KR7010B-GSI	70mm	100mtr	125gsm	Brown	In	16	15.00
KR6030B-GSI	60mm	300mtr	125gsm	Brown	In	8	18.24
KR6030B-GSO	60mm	300mtr	125gsm	Brown	Out	8	18.24
KR7010BW-GSI	70mm	100mtr	125gsm	Oyster	In	16	15.10
KR7015B-GSI	70mm	152mtr	125gsm	Brown	In	6	8.60
KR7015BW-GSI	70mm	152mtr	125gsm	Oyster	In	6	8.60
KR7030B-GSO	70mm	300mtr	125gsm	Brown	Out	6	15.12
KR7030B-GSI	70mm	300mtr	125gsm	Brown	In	6	15.12
76mm Core							
KR7615SW-GSI	76mm	152mtr	125gsm	Snow White	In	6	10.50

Tegrabond® Pre-Printed Reinforced Tapes



Features

- > **KR7015-SENSEAL** is printed with the 'SENTRY SEAL' brand, which highlights the tamper-proof properties of the tape
- > **KR7015B-CAUT** is printed with a 'CAUTION IS THIS PACKAGE DAMAGED?' message, which encourages recipients to check for damage before opening the package
- > **KR7015B-IMPA** is printed with an 'IMPORTANT CAUTION', which alerts personnel to the need for careful handling

Benefits

- > Printed tapes send a message that the consignment requires appropriate care and will be subject to scrutiny on arrival
- > Pre-printed messages are available from stock and without the extra MOQs and costs of custom-printed tape

Specifications

Code	Width	Length	Printed message	Gummed side in/out	Rolls /case	Weight /case (kg)
KR7015-SENSEAL	70mm	152mtr	SENTRY SEAL	In	6	8.7
KR7015B-CAUT	70mm	150mtr	CAUTION IS THIS PACKAGE DAMAGED?	In	6	8.6
KR7015B-IMPCA	70mm	150mtr	IMPORTANT CAUTION	In	6	8.6



Hotmelt Glues

Hotmelt glues are environmentally responsible, unlike other adhesives they do not contain solvents, producing minimal pollution and little to no environmental effects









Xtegra® Stickfast Hotmelt Adhesives

Specifications				
<p>Precision extruded to fit Stickfast glue guns and compatible with most glue guns on the market.</p> 	<p>FSS Fast Set</p> <p>Fast setting stick for bonding card & paper. Ideal for carton sealing & packaging.</p>	<p>MPS Multipurpose</p> <p>The most popular glue stick. Use for fabrics, upholstery, plastics etc. Long set time.</p>	<p>LTS Low Melt</p> <p>Ideal for bonding heat sensitive materials e.g. polystyrene without damage. Also use on fabrics, paper, card etc. Use in low temp guns.</p>	<p>HSS High Strength</p> <p>Higher strength for assembly. Excellent on many plastics, metal & wood.</p>
	<p>description</p> <p>Superior fast setting hotmelt for rapid closing and sealing of cartons. Ideal for all packaging applications.</p>	<p>All purpose hotmelt with medium to long set time. Ideal for a wide range of industrial and general-use applications.</p>	<p>Special hotmelt applied at lower temperature. Ideal for heat sensitive products and reduced risk of accidental burns.</p>	<p>Assembly grade hotmelt for 'difficult' surfaces. Excellent adhesion and high molten tack for quick fixing of tile displays, carpet fitting etc.</p>
	<p>set time</p> <p>5-10 sec</p>	<p>20-30 sec</p>	<p>15-20 sec</p>	<p>20-30 sec</p>
	<p>set colour</p> <p>Tan</p>	<p>Clear</p>	<p>White</p>	<p>Amber</p>
	<p>sizes (mm)</p> <p>Sticks 12mm x 300mm (FSS12) Sticks 18mm x 300mm (FSS18) Slugs 43mm x 43mm (FSS43)</p>	<p>Sticks 12mm x 300mm (MPS12) Sticks 18mm x 300mm (MPS18) Slugs 43mm x 43mm (MPS43)</p>	<p>Sticks 12mm x 300mm (LTS12)</p>	<p>Sticks 12mm x 300mm (HSS12) Sticks 18mm x 300mm (HSS18) Slugs 43mm x 43mm (HSS43)</p>
<p>applicator gun*</p> <p>All models</p>	<p>All models</p>	<p>All low temp. models</p>	<p>All models</p>	
<p>materials bonded:</p> <p>plastic</p> <p>wood</p> <p>textile</p> <p>polystyrene</p> <p>cardboard</p> <p>metal</p> <p>ceramic</p>	<p>●</p> <p>○</p> <p>●</p> <p>●</p> <p>○</p> <p>○</p> <p>○</p>	<p>○</p> <p>●</p> <p>●</p> <p>●</p> <p>●</p> <p>○</p> <p>○</p>	<p>●</p> <p>●</p> <p>●</p> <p>○</p> <p>○</p> <p>●</p>	
<p>12mm Sticks (Price per box)</p> <p>1-12 Boxes</p> <p>13+ Boxes</p>	<p>FSS12</p> <p>FSS12</p>	<p>MPS12</p> <p>MPS12</p>	<p>LTS12</p> <p>LTS12</p>	<p>HSS12</p> <p>HSS12</p>
<p>18mm Sticks (Price per box)</p>	<p>FSS18</p> <p>FSS18</p>	<p>MPS18</p> <p>MPS18</p>		<p>HSS18</p> <p>HSS18</p>
<p>43mm Slugs (Price per box)</p>	<p>FSS43</p> <p>FSS43</p>	<p>MPS43</p> <p>MPS43</p>		<p>HSS43</p> <p>HSS43</p>
<p>Quantity and weight per box 12mm = 34 sticks per kg, 170 sticks per box, 5kg per box 18mm = 14 sticks per kg, 70 sticks per box, 5kg per box 43mm = 17 slugs per kg, 170 slugs per box, 10kg per box 85 slugs per box, 5kgs per box</p>	<p>(● = Recommended 1st choice; ○ = Recommended alternatives) FSS43 10kg All other codes 5kg</p> <p>*Please specify correct stick size for your gun when ordering.</p>			

Contact us now to find out more about our wide range of hotmelt glue guns



Packer Hotmelt Adhesives

Specifications				
Designed fit all Packer glue gun models				
Product Name	881-12-300-5	88-12-300-5	881-43-10	88-43-10
Suitability	Long setting time & high performance	Long setting time	Long setting time & high performance	Long setting time
Sizes (mm)	12mm sticks	12mm sticks	43mm slugs	43mm slugs
Adhesive Type:				
Low melt	-	-	-	-
Packaging	-	-	-	-
General purpose	-	-	-	-
High performance	●	●	●	●
Spray	-	-	-	-
Temperature	195°C	195°C	195°C	195°C
Colour	Light Brown	White	Light Brown	White
Open Time	Long	Long	Long	Long
Viscosity	Low	Low	Low	Low
Application	Ceramics, Plastic & Wood	Glass, Light Metal & ABS Plastic	Ceramics, Plastic & Wood	Glass, Light Metal & ABS Plastic
Pack size	5kg box	5kg box	10kg box	10kg box
				
Product Name	92-43-10	94LM-12-200-5	94LM-43-10	95-12-300-5
Suitability	Long open time, bead or spray	Low melt temperature	Low melt temperature	General purpose medium set
Sizes (mm)	43mm slugs	12mm sticks	43mm slugs	12mm sticks
Adhesive Type:				
Low melt	-	●	●	-
Packaging	-	-	-	-
General purpose	-	-	-	●
High performance	●	-	-	-
Spray	●	-	-	-
Temperature	180°C	130°C	130°C	195°C
Colour	Light Brown	White	White	Light Brown
Open Time	Long	Short	Short	Long
Viscosity	Medium	Low	Low	Medium
Application	Fabric, upholstery, foams, bubble film etc.	Expanded polystyrene, thin films, balloons	Expanded polystyrene, thin films, balloons	Ceramics, rigid PVC & polystyrene
Pack size	10kg box	5kg box	10kg box	5kg box
				
Product Name	95-43-10	96-12-300-5	96-43-10	97-12-300-5
Suitability	General purpose medium set	Fast setting packaging	Fast setting packaging	Medium setting general purpose
Sizes (mm)	43mm slugs	12mm sticks	43mm slugs	12mm sticks
Adhesive Type:				
Low melt	-	-	-	-
Packaging	-	●	●	-
General purpose	●	-	-	●
High performance	-	-	-	-
Spray	-	-	-	-
Temperature	195°C	195°C	195°C	195°C
Colour	Light Brown	Light Brown	Light Brown	Clear
Open Time	Long	Short	Short	Medium
Viscosity	Medium	Medium	Medium	High
Application	Ceramics, rigid PVC & polystyrene	Cardboard boxes	Cardboard boxes	Glass, fabrics, wood, card, some plastics
Pack size	10kg box	5kg box	10kg box	5kg box
				
Product Name	97-15-300-5	97-43-10	98-12-300-5	98-43-10
Suitability	Medium setting general purpose	Medium setting general purpose	High performance	High performance
Sizes (mm)	15mm sticks	43mm slugs	12mm sticks	43mm slugs
Adhesive Type:				
Low melt	-	-	-	-
Packaging	-	-	-	-
General purpose	●	●	-	-
High performance	-	-	●	●
Spray	-	-	-	-
Temperature	195°C	195°C	195°C	195°C
Colour	Clear	Clear	Clear	Clear
Open Time	Medium	Medium	Long	Long
Viscosity	High	High	Medium	Medium
Application	Glass, fabrics, wood, card, some plastics	Glass, fabrics, wood, card, some plastics	Many plastics & light gauge metals	Many plastics & light gauge metals
Pack size	5kg box	10kg box	5kg box	10kg box

Paper Protection

Kraftek® Edge Boards



- > Choose natural kraft lined for general use or white kraft lined for outdoor storage and high moisture exposure
- > Protect edges from strap damage and minor impact
- > Improve load stability of palletised cartons
- > Made from sustainable softwood sources and recycled pulp
- > 100% recyclable



Specifications

Code	Length (mm)	Flange widths (mm)	Thickness (mm)	Qty per pack	Qty per pallet	kg/pack
KVB35.2.1000	1000	35 x 35	2.0	50	6,300	4.50
KVB35.2.1200	1200	35 x 35	2.0	50	2,700	5.40
KVB35.2.1320	1320	35 x 35	2.0	50	2,700	6.60
KVB35.2.2000	2000	35 x 35	2.0	25	2,100	9.00
KVB35.3.475	475	35 x 35	3.0	50	8,000	2.50
KVB35.3.500-40	500	35 x 35	3.0	40	2,000	2.64
KVB35.3.910	910	35 x 35	3.0	50	6,000	5.80
KVB35.3.1000	1000	35 x 35	3.0	50	5,100	6.60
KVB35.3.1200	1200	35 x 35	3.0	50	4,200	8.20
KVB35.3.1500	1500	35 x 35	3.0	50	4,200	8.40
KVB35.3.1600	1600	35 x 35	3.0	50	4,200	12.00
KVB35.3.1750	1750	35 x 35	3.0	50	4,200	11.90
KVB35.3.1800	1800	35 x 35	3.0	50	4,200	13.60
KVB35.3.2000	2000	35 x 35	3.0	50	4,200	13.90
KVB35.4.532	532	35 x 35	4.0	50	5,100	2.50
KVB45.3.1000-50	1000	45 x 45	3.0	50	3,000	9.17
KVB50.2.1000	1000	50 x 50	2.0	50	5,400	5.60
KVB50.3.500-40	500	50 x 50	3.0	40	3,000	4.12
KVB50.3.900	900	50 x 50	3.0	50	3,150	9.17
KVB50.3.950	950	50 x 50	3.0	50	2,700	10.30
KVB50.3.1000	1000	50 x 50	3.0	50	2,700	12.36
KVB50.3.1200	1200	50 x 50	3.0	50	3,000	14.30
KVB50.3.1300	1300	50 x 50	3.0	20	1,200	15.70
KVB50.3.1500	1500	50 x 50	3.0	50	3,000	17.90
KVB50.3.1750	1750	50 x 50	3.0	50	2,700	20.80
KVB50.3.1800	1800	50 x 50	3.0	50	2,700	3.80
KVB50.3.2000	2000	50 x 50	3.0	50	2,700	4.50
KVB50.35.580	580	50 x 50	3.5	50	3,150	14.11
KVB50.35.780	780	50 x 50	3.5	25	2,500	12.59
KVB50.35.1280	1280	50 x 50	3.5	50	2,500	12.09
KVB50.4.1000	1000	50 x 50	4.0	50	5,400	10.67
KVB50.4.1200-40	1200	50 x 50	4.0	40	4,000	11.30
KVB50.5.2000	2000	50 x 50	5.0	25	1,500	11.30
KVB50.5.510	510	50 x 50	5.0	20	1,200	8.13
KVB60.2.1300	1300	60 x 60	2.0	50	6,000	7.80
KVB60.3.1000-50	1000	60 x 60	3.0	50	2,700	13.50
KVB60.3.2000	2000	60 x 60	3.0	25	2,700	12.09
KVB75.25.1000	1000	75 x 75	2.5	25	2,000	24.18
KVB75.3.800	800	75 x 75	3.0	25	2,500	18.14
KVB75.3.1800	1800	75 x 75	3.0	25	2,000	6.90
KVB80.6.500-40	500	80 x 80	6.0	40	1,000	9.20
KVB80.6.1000-40	1000	80 x 80	6.0	40	1,120	16.80
KVB80.6.1500-20	1500	80 x 80	6.0	20	960	19.24
KVB100.3.1000W	1000	100 x 100	3.0	25	1,250	9.20
KVB100.5.1000W	1000	100 x 100	5.0	20	1,120	9.18
KVB100.5.1830W	1830	100 x 100	5.0	20	1,120	16.00

Kraftek® Moisture Resistant White Kraft Lined Edge Boards



Specifications

Code	Length (mm)	Flange widths (mm)	Thickness (mm)	Colour	Qty per pack	Qty per pallet	kg/pack
MRVB35.3.1000-20	1000	35 x 35	3.0	White	20	4,000	2.40
MRVB35.3.100-500	100	35 x 35	3.0	White	500	18,000	6.00
MRVB35.3.1200-40	1200	35 x 35	3.0	White	100	4,000	6.00
MRVB35.3.900	900	35 x 35	3.0	White	50	4,200	6.00
MRVB35.3.1000	1000	35 x 35	3.0	White	50	5,000	6.00
MRVB60.4.1000-20	1000	60 x 60	4.0	White	20	1,000	7.20
MRVB60.4.1200-20	1200	60 x 60	4.0	White	20	2,100	7.94
MRVB60.4.150-500	150	60 x 60	4.0	White	500	20,000	



Perforated Edge Boards

- > Good impact absorption qualities
- > A cost-effective use of most economic lengths
- > 15mm thick, 6-ply corrugated board
- > Perforated at 200mm intervals



Specifications

Code	Length (mm)	Flange widths (mm)	Qty per pack	Weight (kg/pack)
CP80120	1200	80 x 80	50	12.5
CP50120	1200	50 x 50	50	10.0

MG Pure Ribbed Kraft Paper Sheets

- > 70gsm pure ribbed kraft
- > Priced and sold per ream (c. 480-500 sheets)



Specifications

Code	Sheet Size	Weight (kg/roll)
PKP01	700 x 1150mm	18.11
PKP02	900 x 1150mm	23.29

MG Pure Ribbed Kraft Paper Rolls

- > Roll length 70gsm = 285mtr
- > Roll length 88gsm = 225mtr



Specifications

Code	Width	Weight	Weight (kg/roll)
PKP03	450mm	70gsm	8.98
PKP04	500mm	70gsm	9.98
PKP05	600mm	70gsm	11.97
PKP06	750mm	70gsm	14.96
PKP07	900mm	70gsm	17.96
PKP08	900mm	88gsm	18.23
PKP09	1200mm	70gsm	23.94

Corrugated Corner Protectors

- > Good impact absorption qualities
- > 15mm thick, 6-ply corrugated board



Specifications

Code	Dimensions (mm)	Qty per pack	Weight (kg/pack)
CPC80	80 x 80 x 80 (internal)	290	14.25

MF Imitation Kraft Paper Sheets

- > A cheaper alternative to pure kraft paper



Specifications

Code	Sheet Size	Weight	Pack Qty.	Weight (kg/roll)
IKP02	900 x 1150mm	90gsm	1 ream (480-500 sheets)	23.29
IKP11	750 x 1150mm	70gsm	50 sheets	1.58
IKP12	900 x 1150mm	70gsm	50 sheets	1.90

MF Imitation Kraft Paper Rolls

- > Imitation kraft



Specifications

Code	Roll Size	Weight	Weight (kg/roll)
IKP03	600mm x 200mtr	90gsm	10.80
IKP04	750mm x 200mtr	90gsm	13.50
IKP05	900mm x 200mtr	90gsm	16.20
IKP06	1150mm x 200mtr	90gsm	20.70
IKP09	500mm x 300mtr	70gsm	9.80
IKP10	900mm x 300mtr	70gsm	17.64
IKP13	750mm x 300mtr	70gsm	14.70

Power Machine Stretch Film Cast 300%

- > 46 rolls/pallet



Specifications

Code	Film width	Film length	Film thickness	Core	Weight (kg/case)
MSF520	500mm	1700mtr	20mu	76mm ID standard core	17.7
MSF523	500mm	1550mtr	23mu	76mm ID standard core	18.6



X-Wrap Protective Paper System

The X-Wrap paper is ideally suited for packaging sensitive and fragile products such as bottles, vases and perfumes.

It is an ecological and space-saving alternative to plastic wrapping. For enhanced product protection and a improved appearance, an intermediate layer made of white tissue paper can be inserted.

X-Wrap Benefits

- > Suitable for packaging sensitive / fragile products
- > Visually appealing packaging
- > All-round protection of the products
- > Ecological alternative to bubble wrap
- > Simple and intuitive handling



Filling and padding with paper

- > Shock absorbing property (shock absorber effect)
- > Protection for pointed / sharp-edged products
- > Leak protection for liquids (absorbency)
- > Flexibly adapts to the cavities in the box
- > Suitable for air freight
- > Highest recycling rate in the packaging area
- > Product fixation possible
- > Suitable for long-term storage
- > Single material packaging, thus easy disposal
- > High acceptance by end customers
- > Available in white or brown rolls

Product codes:

Dispenser: **XWP-DISP**
 X-Wrap Dimensions
 (L x W x H): 33 cm x 62 cm x 28 cm

Interleaf Adapter: **XRP-IA**
 X-Wrap dispenser with interlayer adapter
 (L x W x H): 33 cm x 62 cm x 44 cm

Telescopic Assembly: **XRP-TA**



Specifications

Code	Grammage	Quality	Width	Barrel Length	Units per Pallet
XW3825B	80 g / m ² brown	Kraft paper	38 cm	250 m	60 rolls
XW3825W	80 g / m ² white	Kraft paper	38 cm	250 m	60 rolls
XW2340-IP	27 g / m ² intermediate layer	Tissue paper	23 cm	400 m	168 rolls



Flexible Paper Sleevling

Lightweight paper packaging solution for a sustainable world. Helping to reduce single-use plastic packaging.

Paper is one of the few truly sustainable products. It is made from renewable resources, biodegradable, and is one of the most highly recycled products in the world.

- > 100% recyclable, plastic-free packaging solution
- > Water based glues, ensuring the product is biodegradable
- > 45gsm paper from FSC sources
- > 350gsm side strip 100% paper
- > 4 sizes available - 100mm, 200mm, 250mm and 350mm in length
- > 600 pieces per carton
- > 3 colours
- > Flat packed for optimal storage
- > Pick a sleeve that is flush to your packing carton, or use void fill for additional support at either end of the sleeve

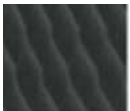
Available Colours



White



Kraft



Black



transpal 



Stretch Wrap Machines



Soft wrapping and power pre-stretch

Soft wrapping and power pre-stretch

Features of pallet stretch wrappers worth considering before you buy.

>Soft Wrapping

If an automated system is used to apply stretch film to a square sided pallet load, although the film tension remains constant as it emerges from the system, applied tension will be higher at the corners of the load due to their being nearer to the dispensing head. This can cause distortion and even damage if the tension at

the corners is too high. A soft wrapping function compensates for the load profile to provide more consistent applied tension at all areas of the wrap.

>Power Pre-stretch

By applying tension to stretch film between leaving the roll and being applied to the pallet can extend its length by up to four times, meaning a 75% reduction in film usage, and because the film is under tension before it is applied, as it contracts it holds the palletised load more securely.

RSW6

Robot Pallet Stretch Wrapper



The Optimax® RSW6 Robotic Pallet Stretch Wrapper helps to maximise despatch operation efficiency and productivity.



Simple to use control panel

Quick and easy film loading



Reliable, consistent automated pallet stretch wrapping



Features

- > No maximum pallet weight, width or depth
- > Minimal clearance required around pallet
- > Easily relocated to where wrapping required
- > Powered film pre-stretching minimises film usage and creates a more stable pallet load
- > Password-protected touchscreen control panel features
 - Independently adjustable top and bottom wrapping count & tension
 - Two power pre-stretch offering 230% & 300% film length increase
 - Adjustable cart rotation speed
 - Adjustable film carriage speed
- > Film carriage is easily reloaded and features an anti-drop mechanism for improved safety
- > One-way idling roller prevents entanglement in the event of film breakage and facilitates film re-feed
- > Soft-wrapping feature protects pallet contents from damage due to uneven film tension at corners
- > Automatic photocell pallet height detection
- > Automatic end of cycle film cutting
- > High capacity, zero maintenance batteries deliver up to 300 pallet wraps per charge

Specifications

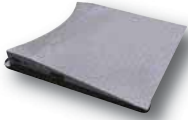
- > Batteries: 2x 12v100Ah non-maintenance lead acid
- > Power consumption: 0.7kW
- > Dimensions: 1175 x 1758 x 2570mm
- > Max. wrapping height: 2200mm
- > Min. wrapping height: 450mm
- > Cart rotation speed: 20-90mtr/min.
- > Film carriage speed: 1-5mtr/min.
- > Min. pallet size: 600 x 600mm
- > Operation radius: 1150mm from edges of load or pallet
- > Wraps per charge: >300 pallets
- > Nett weight: 292kg



PSW002 Semi-Automatic Powered Pre-Stretch



Electronic control panel



Order the additional **PSWR-2** ramp for pallet truck loading and unloading of the turntable



12 MONTHS PARTS OR RETURN TO BASE WARRANTY AS STANDARD.



Features

- > 300% power pre-stretch – 1 metre of film stretches to 4 metres
- > 1650mm turntable with 2000mm wrapping height
- > Home position: the turntable always stops at the same position
- > Pallet height photo sensor
- > Adjustable tension, turntable and carriage speed
- > Soft start & stop with cycle pause function
- > Choice of automatic or manual modes
- > 180 degree rotating control box
- > Troubleshooting information displays on screen
- > Safety switch to prevent foot pinch
- > Manual reinforced strapping feature
- > Automatic film pin puncture
- > One way idling roller (keeps film tail outside carriage)

Specifications

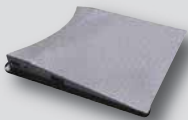
- > Dimensions (W x D x H): 1650 x 2400 x 2345mm
- > Max. wrapping height: 2000mm
- > Max. turntable speed: 12rpm
- > Max. loading weight: 1650kg
- > Turntable diameter: 1650mm
- > Power supply: 240V 13A
- > Power consumption: 1.2kW



PSW003 Semi-Automatic Powered Pre-Stretch with Integrated Digital Weighing Scales



Electronic control panel



Order the additional **PSWR-3** ramp for pallet truck loading and unloading of the turntable



12 MONTHS PARTS OR RETURN TO BASE WARRANTY AS STANDARD.



Features

- > Digital weighing scales on the turntable ramp
- > Increased load capacity of 2000kg
- > 300% power pre-stretch – 1 metre of film stretches to 4 metres
- > 1650mm turntable with 2000mm wrapping height
- > Home position: the turntable always stops at the same position
- > Pallet height photo sensor
- > Adjustable tension, turntable and carriage speed
- > Soft start & stop with cycle pause function
- > Choice of automatic or manual modes
- > 180 degree rotating control box
- > Troubleshooting information displays on screen
- > Safety switch to prevent foot pinch
- > Manual reinforced strapping feature
- > Automatic film pin puncture
- > One way idling roller (keeps film tail outside carriage)

Specifications

- > Dimensions (W x D x H): 1650 x 2400 x 2345mm
- > Max. wrapping height: 2000mm
- > Max. turntable speed: 12rpm
- > Max. loading weight: 2000kg
- > Turntable diameter: 1650mm
- > Power supply: 240V 13A
- > Power consumption: 1.2kW



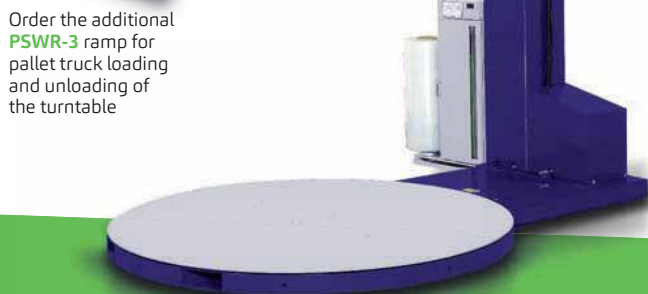
PSW004 Semi-Automatic with Fixed 200% Pre-Stretch



Order the additional **PSWR-3** ramp for pallet truck loading and unloading of the turntable



12 MONTHS PARTS OR RETURN TO BASE WARRANTY AS STANDARD.



Features

- > 200% power pre-stretch – 1 metre of film stretches to 3 metres
- > 1650mm turntable with 2200mm wrapping height
- > Home position: the turntable always stops at the same position
- > Pallet height photo sensor
- > Adjustable tension, turntable and carriage speed
- > Soft start & stop with cycle pause function
- > Choice of automatic or manual modes
- > 180 degree rotating control box
- > Troubleshooting information displays on screen
- > Safety switch to prevent foot pinch
- > Manual reinforced strapping feature
- > Automatic film pin puncture
- > One way idling roller (keeps film tail outside carriage)

Specifications

- > Dimensions (W x D x H): 1650 x 2400 x 2545mm
- > Max. wrapping height: 2200mm
- > Max. turntable speed: 12rpm
- > Max. loading weight: 1650kg
- > Turntable diameter: 1650mm
- > Power supply: 240V 13A
- > Power consumption: 1.2kW





Give your packaging the **Green High Five**

Everyone wants and needs to reduce their environmental impact and to help you achieve that we've compiled a selection of products from our catalogue that meet one or more of our 'Green High Five' criteria.



- > Sustainable
- > Recyclable
- > Reusable
- > Biodegradable
- > Waste Reductive

Some of these offer a viable eco-friendly alternative to traditional packaging products, while others are products that have always met one or more criteria. We've also added products that, while

they may not be made from sustainable or recyclable materials, still make a positive environmental contribution.

This brochure is produced from recyclable paper. We hope you will find it useful and keep it on your desk, if not please pass to a colleague, return to us or pop in the recycling bin so it gets another chance in life.

Thank you!